

TOWN HALL BUDGET FORUM

George Mason University
February 24, 2010

Note – This information represents the state information available as of 2/24/10 and must be regarded as tentative.

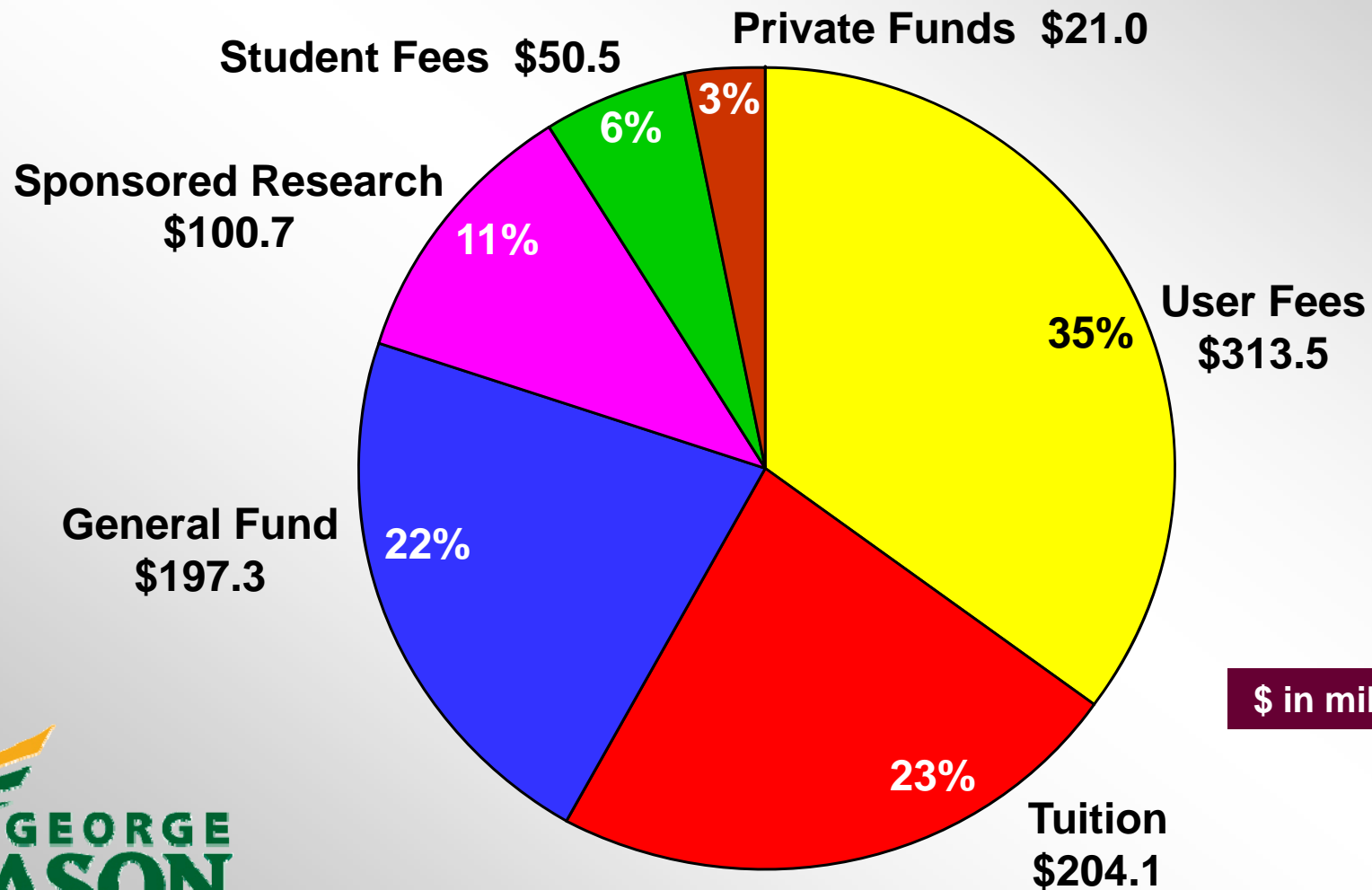
Once the legislative session ends and more precise information is available that will be shared.



Where Innovation Is Tradition

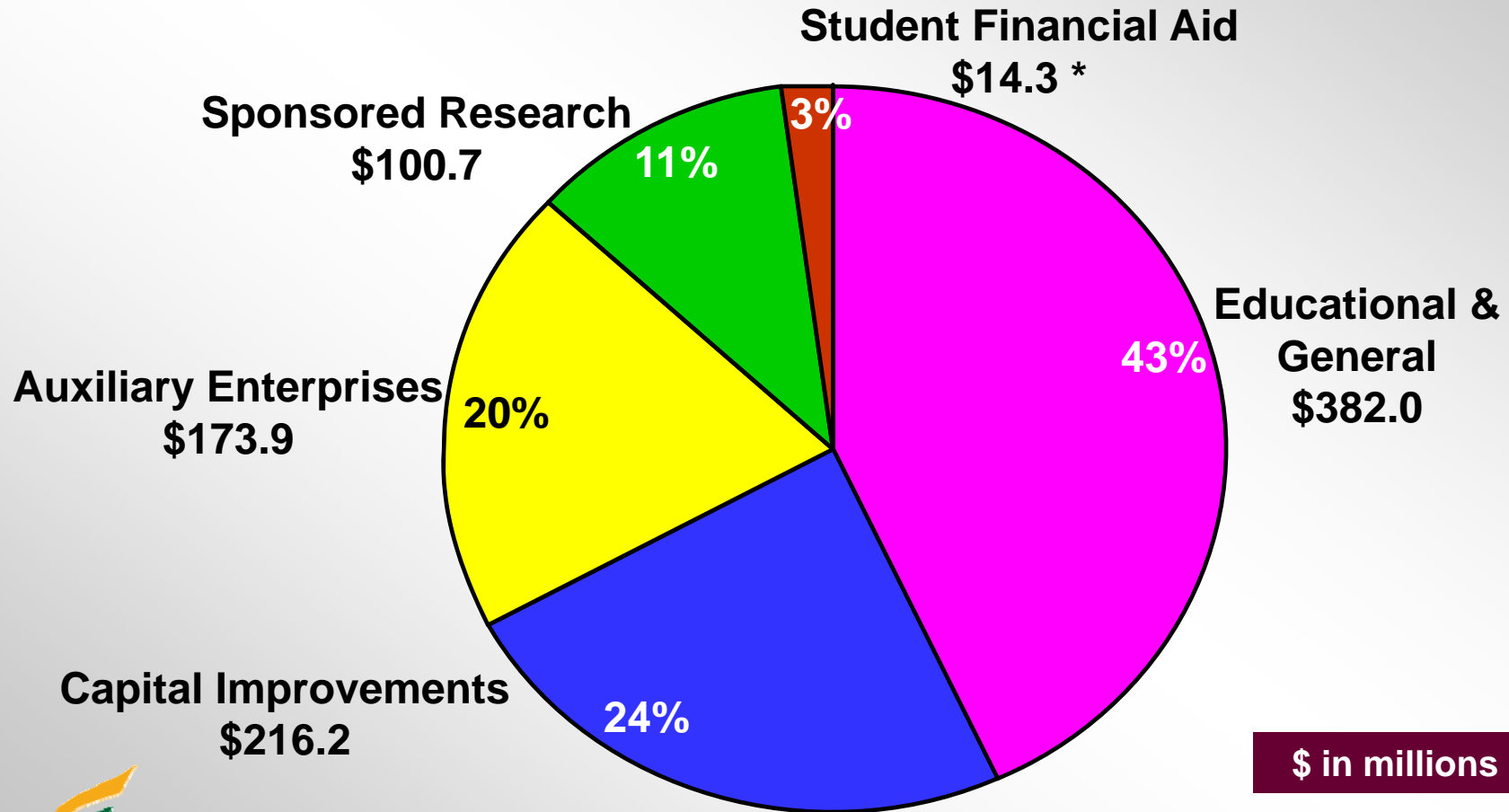
TOTAL BUDGET OVERVIEW

2009-10 REVENUE BUDGET \$887,117,600



TOTAL BUDGET OVERVIEW

2009-10 OUTLAYS \$887,117,600



* State Funded Student Financial Aid



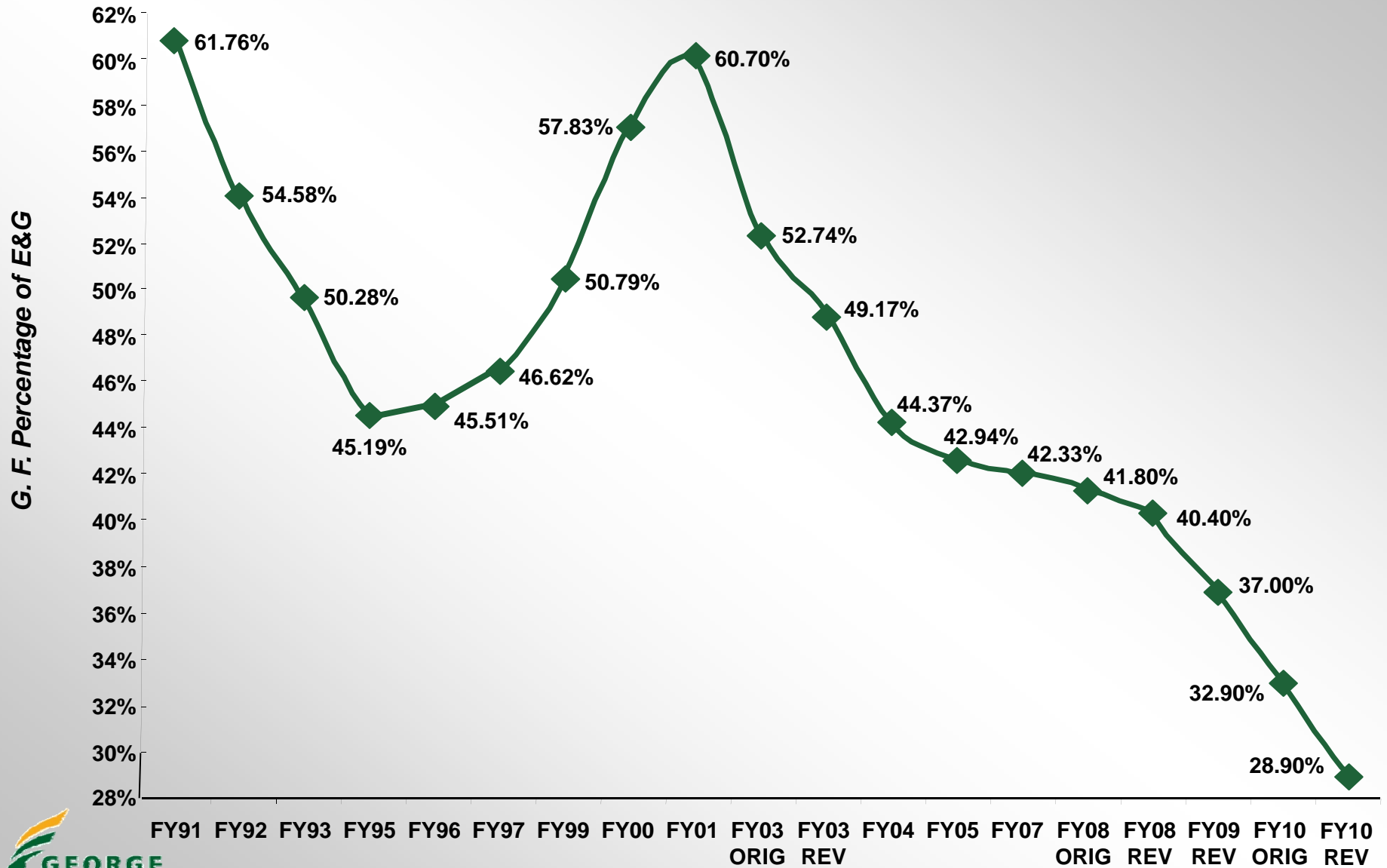
Where Innovation Is Tradition

FUNDING CHANGE IN HIGHER EDUCATION

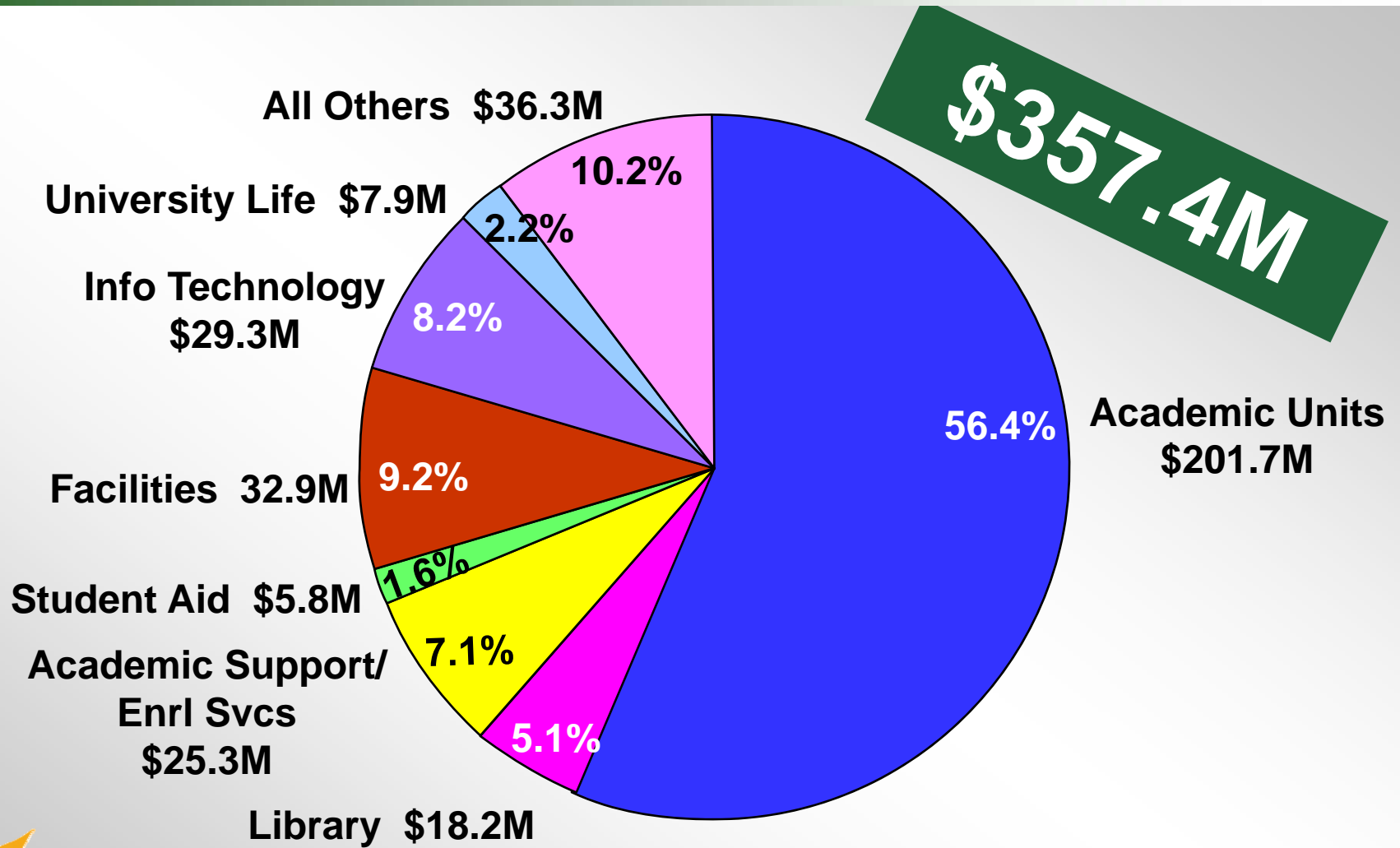
GEORGE MASON UNIVERSITY GENERAL FUND BUDGET REDUCTION HISTORY

DATE	GF REDUCTION	PERCENT
FY08	\$6.8M	5%
FY09	9.7M	7%
FY10	11.2M	8%
FY10 September 2009	17.6M	15%
Total	\$45.3M	35%

GENERAL FUND % OF SUPPORT TREND ANALYSIS



E&G BUDGET BY PROGRAM, FY 2010



FURLOUGHS, BONUSES & RETIREMENT PROPOSALS UNDER CONSIDERATION

	<u>HOUSE VERSION</u>	<u>SENATE VERSION</u>
➤ <u>FURLOUGHS</u>	0 Days = FY 2010 0 Days = FY 2011 0 Days = FY 2012	1 Day = FY 2010 3 Days = FY 2011 3 Days = FY 2012
➤ <u>BONUS</u>	3% December 2011	3% December 2011
➤ <u>RETIREMENT</u>	No Change for Current Employees	Unclear
➤ <u>DEF COMP MATCH</u>	Restored (Cash Match)	No Change = No Cash Match



OPERATING BUDGET PROPOSALS UNDER CONSIDERATION

<u>ITEM</u>	<u>HOUSE VERSION</u>	<u>SENATE VERSION</u>
<u>OPERATING BUDGET</u>	(11) + \$377K of ARRA (12) Eliminate All ARRA [Over \$19M]	(11) No Change (12) Eliminate All ARRA [Over \$19M]
	(12) Reduce GF (\$1.1M)	
<u>EMINENT SCHOLARS</u>	GF Reduce (\$400K)	-0-
<u>ICAR (Special Allocation)</u>	GF Reduce (\$459K)	-0-
<u>INTEREST EARNINGS AUXILIARY ENTERPRISES</u>	(Lose \$2.0M)	(Lose \$2.0M)
<u>INTEREST EARNINGS (E&G)</u>	(Lose \$1.5M)	(Lose \$1.5M)
<u>EQUIPMENT TRUST FUND</u>	(Lose \$200,000)	(Lose \$500,000)

LEGISLATIVE PROPOSALS UNDER CONSIDERATION

TUITION & FEES

PROJECTED
IMPACT:

**8-10%
INCREASE**

HOUSE
VERSION
No Change

SENATE
VERSION
Impose Capital
Outlay Fee of \$2.50
per Credit Hour for
In-State Students

CAPITAL OUTLAY

MAINTENANCE
RESERVE

<-\$1.2M>

<-\$1.5M>

THOMPSON/
WEST (FF&E)

\$500,000

\$500,000

PW RESEARCH LAB (PPEA)

\$0

\$1,500,000

PENDING RETIREMENT LEGISLATION

George Mason University
February 24, 2010

OVERVIEW

- HB1189 is an amendment to the proposed budget
- The Senate has offered a substitute amendment to the bill
- Based upon the best information available today
- Addresses the state retirement system including:
 - Virginia Retirement System (VRS) – defined benefit plan
 - Optional Retirement System (ORP) – defined contribution plan

CURRENT FACULTY & STAFF IMPACT

- As of today, all current Mason faculty and staff will have no change to their VRS or ORP retirement plans

NEW HIRE IMPACT: ORP

Faculty hired July 1, 2010 or after:

House Version

- ORP contribution will be 8% (down from the current 10.4%)

Senate Amendment

- ORP contribution will be 8.9%

NEW HIRE IMPACT: VRS

Employees hired July 1, 2010 or after:

- Will contribute 5% to VRS
- Other provisions of both House and Senate versions include changes to:
 - the retirement age and formula, average final compensation, and the retirement cost of living adjustment (COLA)

FURLOUGH INFORMATION

George Mason University
February 24, 2010



CURRENT FURLOUGH STATUS

- One day furlough likely in FY10
- One 8 hour day (prorated for part-time)
 - Excludes wage, adjunct faculty, and student workers
- Based upon the best information available today
- Still subject to a legislative change
- Too soon to plan for FY11 and FY12

INSTRUCTIONAL & RESEARCH FACULTY

Goals: Minimize impact on students; provide flexibility for faculty

- Will occur during pay period April 25 – May 9
 - Faculty take furlough on a non-teaching day
 - If teaching 5 days per week take two ½ days

CLASSIFIED & ADMIN/PROF FACULTY

Goals: Provide support for learning/classroom experience; schedule furlough to extend a 3-day weekend

- Furlough: Friday, May 28 **OR** Tuesday, June 1
- Department heads determine staffing levels and date

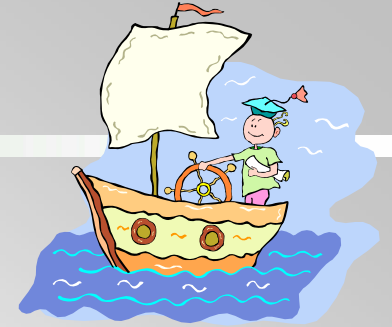
POLICE, PHYSICAL PLANT & HOUSING

(24/7 Operations)

Goals: Support university operations; provide flexibility for staff

- Will occur during pay period May 23 – June 5
- Furlough day will be incorporated into departmental scheduling

DEPARTING THOUGHTS



“Smooth seas do not make skillful sailors.”

~ African Proverb



“I am a slow walker, but I never walk backwards...I am not concerned if you have fallen, I am concerned that you arise.”

~ Abraham Lincoln

“Be the change that you want to see in the world.”

~ Mohandas Ghandi



Make A Difference At Mason



Where Innovation Is Tradition

TOWN HALL BUDGET FORUM

George Mason University
February 24, 2010



Where Innovation Is Tradition